

A man in a dark suit and a woman in a white dress stand in a control room, holding wine glasses. The room is filled with various control panels, gauges, and lights. The text "WEDDINGS AT CONTROL ROOM A" is overlaid in the center.

WEDDINGS AT CONTROL ROOM A

About us



Welcome to Control Room A at Battersea Power Station—a venue steeped in the rich tapestry of London's history and exuding timeless elegance, now fully licensed to host wedding ceremonies and civil partnerships, ensuring your special day is nothing short of unforgettable.

Originally built in the 1930s to oversee the distribution of electricity across London, Control Room A stands as a testament to the city's industrial prowess and architectural grandeur. Restored to its former glory, every corner of this iconic space resonates with the spirit of a bygone era. From the switchboards to the resplendent Art Deco glass ceiling, each detail tells a story of innovation and sophistication, inviting you to embark on a journey through time on your wedding day.

With a capacity of up to 120 guests for your ceremony and reception, and room for an additional 30 evening attendees, we've pinpointed our wedding 'sweet spot.' Step into history and create unforgettable memories at Control Room A, Battersea Power Station's immaculately restored control room.





THE SPACES

01



Spaces The Directors' Entrance

Guests enter the venue through the prestigious Directors' Entrance on the south side of the building. The striking bronze doors feature original sculptural panels representing energy—a fitting introduction to your special day.

Inside, a grand Art Deco lobby awaits, offering the perfect welcome for your wedding day. Guests can check their coats and bags before ascending up the stairs to your unforgettable celebrations at Battersea Power Station.





Spaces The Directors' Bar

Following the grand entrance from the lobby, guests are welcomed into the enchanting ambiance of the Directors' Bar. Accessed via the marble staircase or original lift, this light-filled space boasts a large skylight and window, creating a serene atmosphere.

The Directors' Bar is ideal for your arrival drinks & canapés reception. With ample room for mingling, it sets the perfect tone for the celebrations to come. The Directors' Bar is also licensed for up to 42 guests for those looking for an intimate wedding ceremony.

Whether used for personal gatherings or as an extension of the main do in Control Room A, the Directors' Bar adds a touch of sophistication to your wedding.





Spaces Control Room A

Adorned with beautifully restored control panels, a resplendent gold-coffered glass ceiling, and original Art Deco finishings, Control Room A offers a captivating ambiance that exudes romance and sophistication. Imagine saying "I do" in this historic space, where every detail enhances the significance of your vows. As you celebrate amidst the opulence of this unique venue, from the ceremony to the heartfelt toasts and beyond, every moment becomes a cherished memory in the making. Control Room A provides the perfect backdrop for your love story to begin its next chapter.



BANKSIDE 1

TRANSFORMER 3
HORSEFERRY ROAD 1 & 2

TRANSFORMER 4
HORSEFERRY ROAD 3 & 4

BUS
COUPLER 1

MAIN BUS
REACTOR 1

STANDBY
EXCITER

DIRECT COUPLED
EXCITER

GENERATOR 1



GENERAL INFORMATION

Inclusions



Inclusions for your wedding ceremony and reception at Control Room A:

1. Exclusive Venue Hire - access from 11:00 to 01:00 - sample timings:

- 11:00 - supplier access for set up
- 13:30 - guest arrival
- 14:00 - ceremony in The Control Room
- 14:30 - drinks reception in The Directors Bar
- 16:00 - guests seated for wedding breakfast in The Control Room
- 16:15 - couple's entrance
- 16:30 - food served & speeches
- 18:30 - evening guests to arrive
- 23:00 - bar close
- 23:30 - carriages
- 01:00 - venue clear

2. Staffing & cleaning:

- Venue Manager for seamless coordination
- Pre, post & live event cleaning
- Security provision
- Cloakroom facilities and staffing

3. Catering Packages - please ask for further details. Our list of caterers can be found on page 14

4. Production Package - including lighting, speakers, a dance floor and more. For a full breakdown please jump to page 16

*Note: For Sunday events, license is until 22:00, with guests to depart by 22:30.

Specifications

All capacities are subject to event floorplans, requirements and final approval.

Event Spaces

Dimensions

Capacity

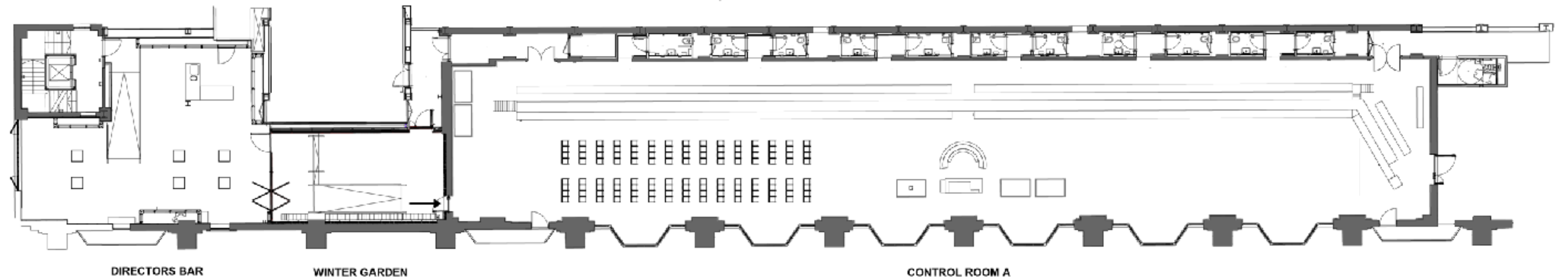
SPACES	L(M)	W(M)	H(M)	SQ,M	STANDING	DINNER & DANCING	CEREMONY ONLY
Control Room A	57.87	9.14	3.5 - 6	650	220	120 - <i>on round tables.</i> <i>An additional 30 evening guests</i> <i>can be invited to join after dinner.</i>	244
Directors' Bar	25	9.5	2.5	235	120	N/A	42

Floorplan Ceremony in Control Room A

Floorplans based on 120 guests, our wedding 'sweet spot':

- Ceremony in Control Room

Please contact the venue team should you wish to see other sample floorplans



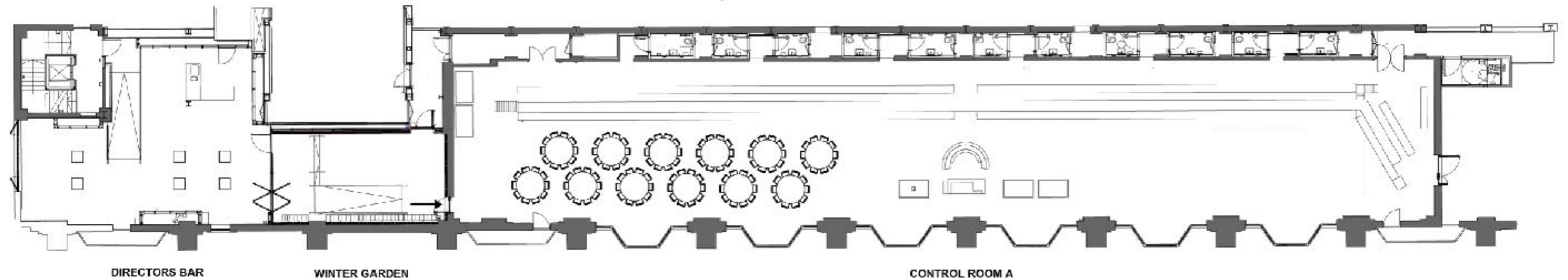
Floorplan

Drinks reception in Directors' Bar & Wedding Breakfast in Control Room A

Floorplans based on 120 guests, our wedding 'sweet spot':

- Guests move to the Directors' Bar for a celebration toast while the Control Room is turned around
- Guests move back to Control Room for the wedding breakfast and, later, dancing

Please contact the venue team should you wish to see other sample floorplans



Suppliers

CATERING	EMAIL	PHONE	WEBSITE
Moving Venue	greatfood@movingvenue.com	020 8691 6661	movingvenue.com
Jimmy Garcia	events@jimmygarciacatering.com	020 7998 3676	jimmygarciacatering.com
Last Supper	info@lastsupperltd.co.uk	020 7378 0101	lastsupperltd.co.uk
PRODUCTION, RIGGING AND POWER	EMAIL	PHONE	WEBSITE
Vibration Production	hello@vibrationproduction.com	020 8523 3967	vibrationdp.com
ENTERTAINMENT	EMAIL	PHONE	WEBSITE
FullCircle	hello@wearefullcircle.co.uk	020 7378 2940	wearefullcircle.co.uk
FLORISTRY	EMAIL	PHONE	WEBSITE
Pinstripes & Peonies	flowers@pinstripesandpeonies.com	020 7720 1245	www.pinstripesandpeonies.com
Mary Jane Vaughan	studio@maryjanevaughan.co.uk	020 7385 8400	www.maryjanevaughan.co.uk



We welcome those
who want to build their
own story.



Production Packages

Vibration Production are the exclusive production partner at Control Room A. Vibration are an event production company who work with you in the pre-event and specialise in the supply of audio-visual and lighting equipment, along with organising supply of furniture, décor and theming pertinent to your wedding's needs. They are the experts in space transformation, working in-line with your budgetary requirements.

Essential Package

Director's Bar

- Background music
- 8 x uplighter in your choice of colour

Control Room A

- Full-range 8 speaker sound system for music
- Music via Spotify or your provided playlist
- 2 x wireless handheld microphones for speeches
- 12 x uplighters in your choice of colour
- 4m x 4m black dance floor
- 2 x floorplans pre-event*
- Production Manager & Sound operator**

Essential Package + DJ Equipment

Director's Bar

- Background music
- 8 x uplighter in your choice of colour

Control Room A

- Full-range 8 speaker sound system for music
- Music via Spotify or your provided playlist
- 2 x wireless handheld microphones for speeches
- 12 x uplighters in your choice of colour
- 4m x 4m black dance floor
- 2 x floorplans pre-event*
- Production Manager & Sound operator**

DJ Equipment

- DJ equipment provision for 'plug and play'
- DJ booth in black or white

Essential Package + DJ Equipment + DJ

Director's Bar

- Background music
- 8 x uplighter in your choice of colour

Control Room A

- Full-range 8 speaker sound system for music
- Music via Spotify or your provided playlist
- 2 x wireless handheld microphones for speeches
- 12 x uplighters in your choice of colour
- 4m x 4m black dance floor
- 2 x floorplans pre-event*
- Production Manager & Sound operator**

DJ Equipment

- DJ equipment provision for 'plug and play'
- DJ booth in black or white

DJ

- 4+ hours set

Essential Package + Stage

Director's Bar

- Background music
- 8 x uplighter in your choice of colour

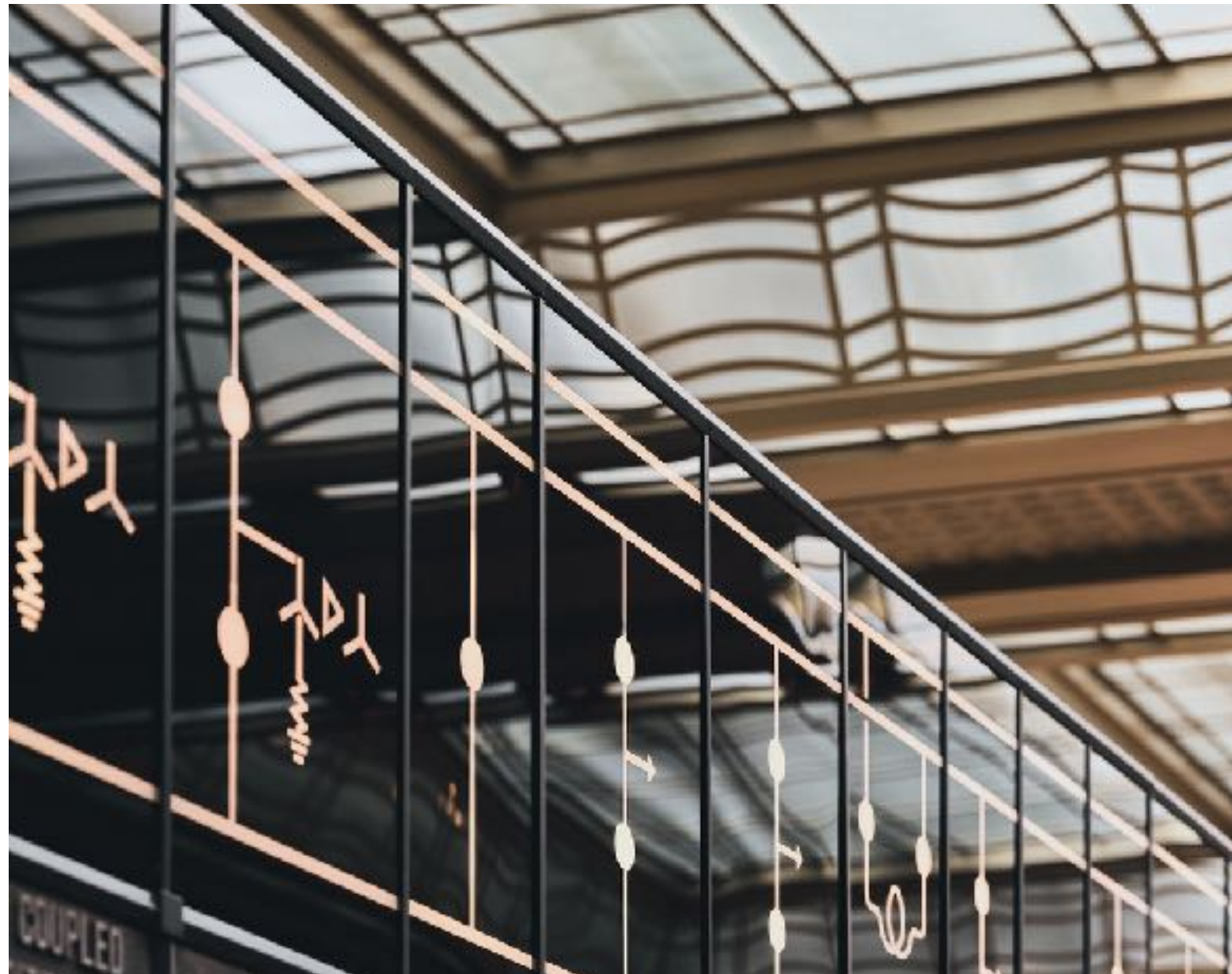
Control Room A

- Full-range 8 speaker sound system for music
- Music via Spotify or your provided playlist
- 2 x wireless handheld microphones for speeches
- 12 x uplighters in your choice of colour
- 4m x 4m black dance floor
- 2 x floorplans pre-event*
- Production Manager & Sound operator**

Stage

- 14' x 8' stage in black or white

FAQ'S - *page 1 of 2*



Can we get married at Control Room A?

Yes, you can get married at Control Room A. We are fully licensed to host wedding ceremonies and civil partnerships.

How much does the registrar cost?

Please visit the [Wandsworth Council website](#) for pricing information, to check registrar availability and to book your registrar.

Do you provide a pre-ceremony interview room?

Yes, the Blue Room would be available for pre-ceremony registrar interviews.

What time can we go to?

Standard hire is 13:00 until 01:00 with guest departure at 23:30 however we can go as late as 02:00 on Fridays and Saturdays, subject to approval. The latest ceremony time the Wandsworth registrars offer is 15:00 Monday to Friday and Sundays. On Saturdays the latest ceremony time they offer is 16:00.

Can I extend the load-in time for suppliers?

Yes, extensions are available for an additional cost and subject to availability and approval.

Do you hold other weddings or parties on the same day?

It is possible that other events will take place on the same day however only ever outside of your hire period. Your time with us is exclusive.

How much does it cost to have a wedding at Control Room A?

We have a number of packages available but we will also take the time to understand what you are looking for and put together a bespoke quote for you based on your requirements.

How much is the deposit to secure my event date?

A deposit of 25% of your total booking is required within 30 days to confirm your date.

Are you party friendly?

Although we are a heritage building, we also allow dancing, red wine and music. Our expert suppliers are well informed on the possibilities within the venue and so will help you plan accordingly.

Do you allow live flames in the venue?

Live flames are not permitted. LED candles must be used instead.

Is there any parking available to guests?

Parking is available in nearby car parks operated by Battersea Power Station. Details can be found on their website, <https://batterseapowerstation.co.uk/getting-here/>.

Is there accommodation on site?

No but the [art'otel](#) is a stones throw away from the venue and the [Pestana Chelsea Bridge Hotel & Spa](#) is just around the corner.

Are you dog friendly?

No, aside from service dogs

FAQ'S - page 2 of 2



Are cloakroom staff included in the wedding package?

Cloakroom equipment and staffing is included in your catering package.

Are there options for additional production in the venue?

Our in-house production team are happy to discuss your requirements and can provide various packages and options.

Is it possible to have different/ additional furniture than what is included?

Additional furniture options are available at varying costs. Our suppliers are happy to discuss different options with you. Please note opting for different furniture may reduce your guest numbers.

Can we use an external supplier for decor and theming?

Approval from the venue manager is required for external suppliers.

Can I use my own cake supplier?

Absolutely, just make sure the venue team have their details to discuss logistics.

Can I use my own florist?

We can consider external florists, subject to them providing the correct insurance and healthy & safety documentation.

Is the bar included in the venue hire?

Yes, a bar is included provided by your chosen caterer, with upgrade options available.

What is the cost for additional security?

Security is included in your hire fee. Additional security costs may apply depending on requirements.

Is there a service charge?

No, this is not charged. All costs are quoted clearly during your planning so there are no unexpected extras.

Is there a corkage fee?

Our listed caterers can talk through corkage fee options with you.

Can I use my own caterer?

We work with 3 fantastic approved caterers who would be delighted to discuss your requirements. If you would still like to use an external caterer, please speak to the venue team. Buyout fees apply.

Do I need insurance?

We require Public Liability Insurance cover of £10million, as we are a Grade II listed building. We also recommend you take out wedding insurance cover for peace of mind.

Do you charge a damage deposit?

Yes, we charge a damage deposit which is fully refundable after the date of your wedding once a full venue clean and inspection has been completed, and any outstanding costs have been paid in full. Please speak to the team for further information.

Untold *possibilities*

THANK YOU

+44 (0)20 3725 6053

hello@controlroomabattersea.com

Photo credits:: Victoria Ferguson Accessories / Lydia Stamps Photography / Pinstripes & Peonies Florist / Victoria / Vaughan Florist / Jason Regent / Laura Basevi / Philippa Goodchild / Skinimal

Control Room A